

SETUP



- Place the AEROLUX upright on flat ground. Pull both arm rests in opposite directions to start unfolding (image 1)
- Press down on the seat until you hear the seat lock in place (image 2) **WARNING:** When unfolding the seat, please press down keeping your hand flat on the seat surface. This is to prevent your fingers from being pinched. Avoid wrapping your fingers around the seat frame
- Swivel up the push handles 90° until it locks into place (image 3)

INSTALL THE FOOT RESTS



- Insert foot rests into the tube on the front castor, aligning the holes (image 1)
- When foot rest is fully inserted and holes are aligned, insert the locking pin (image 2)
- **OPTIONAL:** Secure leg support strap around front forks with velcro behind the posts (image 3)

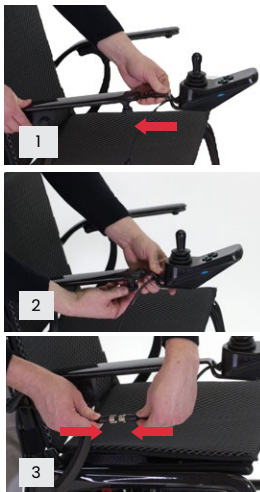
INSTALL THE CUSHIONS



- Place the back rest cushion on the back frame and fold the top flap to secure the velcro behind the chair (image 1)
- Place the seat cushion on the seat frame and fold the front lip underneath the chair to secure the velcro (image 2)

WARNING: Never transport the AEROLUX in a tie down system, as it is not compatible with them. Never sit in the power chair and be transported in a moving vehicle. Do not store or transport the folded power chair in the front passenger seat with the driver's side where it could move or slide.

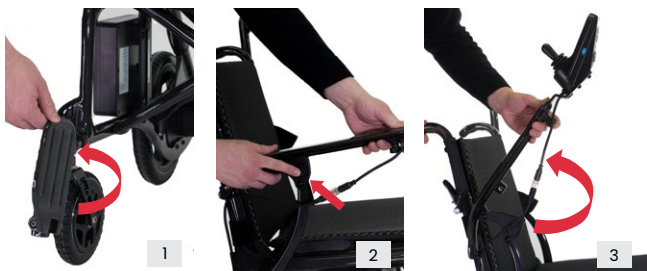
INSERT THE JOYSTICK



- Slide the joystick into the armrest tube until a comfortable arm length is achieved for the user (image 1)
 - Tighten the corkscrew to secure the joystick (image 2)
 - Align the arrows of the joystick connection cables and press them together to plug the joystick controller in (image 3)
 - Rotate the coupling over the connection point to secure the connection
- WARNING:** Align the joystick connector's pins with the holes carefully prior to pressing them together. Improper alignment or forceful pressing can bend or break the pins, making the joystick inoperable.



GETTING IN AND OUT



- Before sitting in the Power Chair, be sure the power button is OFF and the rear brake levers are in the DOWN (DRIVE) position. If you prefer a front entry, we recommend flipping up the foot rests (image 1)
- **DO NOT** step on the footplate when entering or exiting AEROLUX as it may cause the power chair to move in an unsafe manner
- To enter on the side push the arm rest release button (image 2). Raise arm rest back and away (image 3). When seated, lower arm rest back into position and ensure it is locked

CONTROLLER

+ INCREASE SPEED
Press the **PLUS +** button to increase the speed

- DECREASE SPEED
Press the **MINUS -** button to decrease the speed

Horn
Press the  button to sound the horn

7-Speed Control Lights

SPEED CONTROL LIMITS

- 1-Light On 1.5 MPH
- 2-Lights On 2.25 MPH
- 3-Lights On 3 MPH
- 4-Lights On 3.75 MPH
- 5-Lights On 4.5 MPH
- 6-Lights On 3.7 MPH
- All 7-Lights On Max Speed



POWER ON/OFF
Press the **RED** button to turn the power chair ON or OFF

Battery Indicator Lights

There are a total of 5 battery power indicator lights. From top down the lights will disappear as the battery drains indicating the amount of charge remaining. Recharge at any point before the last light disappears, indicating a fully depleted battery.



- AEROLUX Power Chair has an easy to use 360 degree joystick controller featuring multiple speeds and a battery life indicator
- Take some time in a safe, controlled environment to learn the operation of the controller, the speed and the maneuverability of the AEROLUX
- Be sure to adjust the speed depending on your environment and while turning
- To slow down, slowly bring the joystick back toward the initial position
- To stop, just bring the joystick back to the initial position
- Use extra care when you drive the AEROLUX in reverse

FREE WHEEL MODE



- To put your AEROLUX in Free Wheel Mode, come to a full stop and turn OFF the power on the controller
- Push UP on the two red levers located on each rear wheel as shown