



GENESIS  
LC-150S

FDA Class II Medical Device<sup>1</sup>

GENESIS  
LC-150M

Sitting  Pretty™

## Genesis Collection



Pride Mobility® began in 1986 as a lift chair manufacturer exclusively, and the **Genesis Collection** is an ode to our humble origins. Available in small and medium sizes, you'll experience the comfortable Sophie fabric, available in four unique colors – Latte, Sapphire, Shale, and Cabernet. For an additional cost, you can choose our luxurious Lexis Vinyl fabric in Chestnut.

Kick back, relax, and experience total comfort with the Genesis Collection.

[PRIDEMOBILITY.COM](http://PRIDEMOBILITY.COM)



# Genesis Collection

Model	LC-150S	LC-150M
<b>Size</b>	Small	Medium
<b>User Height</b>	5'3" & under	5'4" - 5'9"
<b>Weight Capacity</b>	325 lbs.	325 lbs.
<b>Seat-to-Floor</b>	18"	20"
<b>Seat Depth</b>	18"	20"
<b>Seat Width</b>	20"	22"
<b>Top of Back to Seat</b>	24"	26"
<b>Fully Padded Chaise</b>	Yes	Yes
<b>Seating Type</b>	Sinous Spring	Sinous Spring
<b>Distance from Wall</b>	17"	18.5"
<b>Overall Width</b>	32"	33"
<b>Total Weight</b>	111 lbs.	116 lbs.
<b>Warranty</b>	2-year Limited	2-year Limited
<b>Position Type</b>	Traditional 3-position	Traditional 3-position

## FEATURES

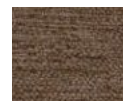
- Hand control with magnetic holder on both sides
- Easy-to-use toggle hand control
- Traditional three-position lift recliner with back and chaise working in tandem
- Integrated battery backup
- Chaise pad design fully supports the legs to eliminate pressure points
- Available in Small and Medium sizes
- Sophie fabrics (Latte, Sapphire, Cabernet, & Shale) and Lexis Vinyl fabric (Chestnut)
- **Small:** 325 lb. capacity / 20" seat width (5'3" height and below recommended)
- **Medium:** 325 lb. capacity / 22" seat width (5'4" to 5'9" height recommended)
- 2-Year Limited Warranty

## OPTIONS & ACCESSORIES

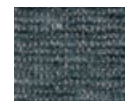
- Lithium battery backup
- Head and arm covers
- Non-skid leg levelers
- Cleaning kit

## FABRIC OPTIONS

### Sophie Fabrics



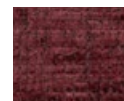
Latte



Sapphire

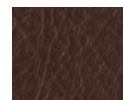


Shale



Cabernet

### Lexis Vinyl<sup>2</sup>



Chestnut



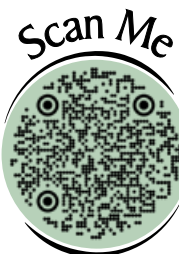
FDA Class II  
Medical Device<sup>1</sup>

Sitting Pretty™



pridemobility.com

800.800.8586



1) Genesis Collection lift chairs are FDA Class II Medical Devices designed to aid individuals with mobility impairments.

2) Additional charges will apply for this fabric.

**NOTE:** Measurements may vary +/- 1". The information contained herein is correct at the time of publication; we reserve the right to alter specifications without prior notice.